

Africa



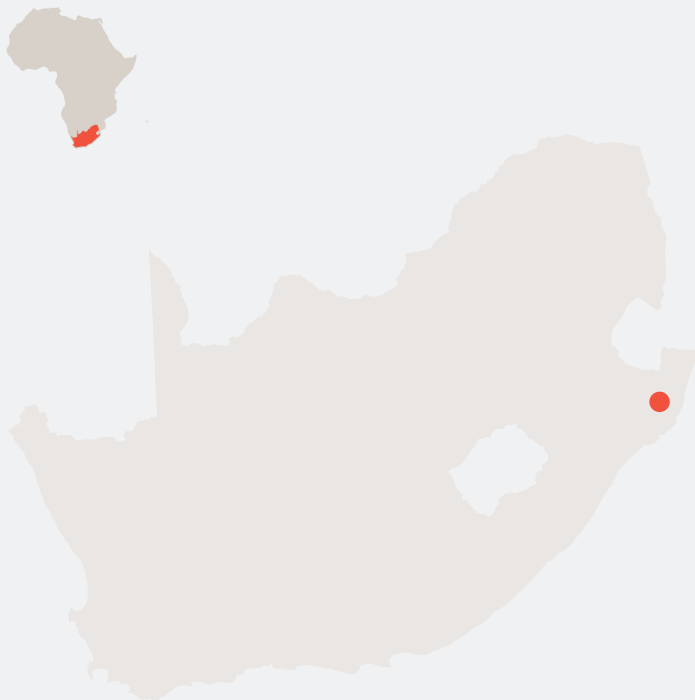
&BEYOND

PHINDA VLEI LODGE

Phinda Private Game Reserve



SOUTH AFRICA



&Beyond Phinda Private Game Reserve encompasses an impressive 28 555 hectares (70 560 acres) of protected wildlife land in KwaZulu-Natal, South Africa. Showcasing one of the continent's finest game viewing experiences, &Beyond Phinda is home to Africa's Big Five (lion, leopard, elephant, buffalo and rhino), as well as 436 bird species. The reserve is particularly well known for close-up sightings of the elegant yet elusive cheetah, as well as the rare black rhino.

With its seven distinct habitats, Phinda is often described as 'Seven Worlds of Wonder', a magnificent tapestry of woodland, grassland, wetland and forest, interspersed with mountain ranges, rivers, marshes and pans. Home to 1 000 hectares of Africa's remaining rare dry sand forest, the reserve is situated in close proximity to the unspoiled beaches and spectacular coral reefs of the Indian Ocean, offering an unmatched combination of bush and beach adventures.

Guests at Phinda experience unforgettable interpretive game drives in open 4x4 safari vehicles, led by professionally trained &Beyond rangers and Zulu trackers, as well as a wide range of optional adventures in the bush and on the beach.

Phinda is home to six magnificent lodges, each with its own individual charm and character: Mountain Lodge, Rock Lodge, Forest Lodge, Vlei Lodge, Zuka Lodge and Phinda Homestead.

{Phinda Vlei Lodge}

www.andBeyond.com



Fringing the reserve's wildlife-rich wetland system, along the edge of a rare sand forest, the vibrant and intimate &Beyond Phinda Vlei Lodge offers a tranquil oasis in the middle of flourishing wilderness.

This charming lodge, which has recently undergone an extensive refurbishment, features just six thatched suites to ensure exclusivity.

Phinda Vlei's fresh new look is inspired by the elegant, turn of the century, plantation-style homesteads of KwaZulu-Natal's sugarcane and pineapple barons. It boasts a wonderfully eclectic and rich identity that is, at the same time, homely and nostalgic. Guests can look forward to interiors accented with antique tapestries, fine art, vintage cottons and linens, as well as elegant silver and crystal ware.

Each air conditioned suite features a spacious room, luxurious ensuite bathroom, and dressing room. The ensuite bathroom provides a sense of old world luxury, while the suite's interiors showcase a mix of curated antiques and collectibles. Guests can also take advantage of a private lap pool and game viewing deck that overlooks a grassy meadow, where they can observe antelope grazing nearby, as well as a variety of birdlife.

Unwind in the beautiful surrounds of the main guest area, which also includes a handsome library, and a convivial fire pit setting - perfect for pre-dinner drinks! Mealtimes are a delightful affair, with a variety of settings to indulge in the lodge's delectable menus; one of which is a spacious, all-weather deck that allows for al fresco dining with spectacular views of the surrounding wetland.

{Phinda Vlei Lodge}

AT A GLANCE

- 6 air-conditioned suites
- Generously sized private lap pools
- Personalised butler service
- Variety of intimate dining settings

WHAT SETS US APART

- Situated between two habitats, the forest and the grasslands
- Panoramic views of the wilderness
- Intimate encounters with wildlife, with close-up sightings from the bedroom and bathroom
- Seven habitats allow for much greater diversity in species and landscapes
- Wildlife includes cheetah, black rhino and nyala
- Variety of adventures available
- 28 555 hectares (70 560 acres) private game reserve with limited number of vehicles

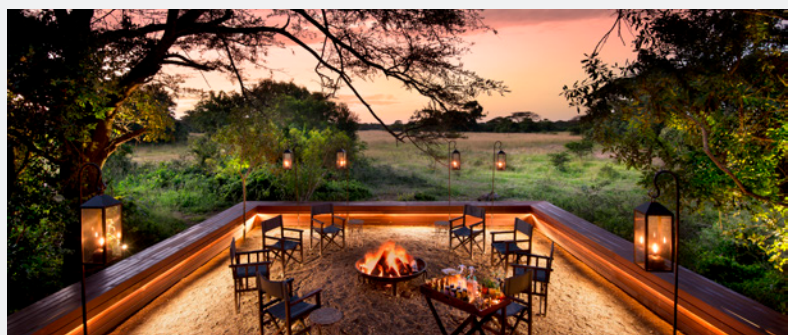
ACTIVITIES

Included

- Twice-daily game drives, including afternoon / evening drives
- Africa Foundation community visits – on request
- Bush walks

At an additional charge

- Phinda Adventures include Zulu village tours, sleeping out under the stars, Maputaland beach adventures, night turtle drives (seasonal), scuba safaris, an ocean safari, and black rhino tracking on foot
- Specialist Safaris include birding, photographic, rhino capture and research, tracking, Specialist Walking Safaris, family and private safaris



GUEST SAFETY

The lodge is not fenced off and we request guests be extremely vigilant at all times. Security guards accompany guests at all times when walking around the lodge at night.

ACCESS

- Airlink offer daily scheduled flights from Johannesburg to &Beyond Phinda Private Game Reserve. Connect &Beyond Phinda to Johannesburg, Cape Town, &Beyond Ngala Private Game Reserve, &Beyond Kirkman's Kamp, northern Sabi Sand Game Reserve, Vilanculos and Livingstone.
- Connect &Beyond Phinda Private Game Reserve to: Johannesburg, Cape Town, &Beyond Ngala Private Game Reserve, &Beyond Kirkman's Kamp, northern Sabi Sand Game Reserve, Londolozi, Ulusaba, Vilanculos and Livingstone. All flights route through either Nelspruit or Skukuza
- Seven-hour drive from Johannesburg on good roads in a two-wheel drive vehicle
- Three and a half-hour drive from Durban on good roads in a two-wheel drive vehicle
- Private charters from anywhere in South Africa can be arranged to &Beyond Phinda Private Game Reserve's airstrip

ACCOLADES



2015 - &BEYOND'S LODGES IN THE &BEYOND PHINDA PRIVATE GAME RESERVE ARE LISTED AMONG THE TOP 100 HOTELS & RESORTS IN THE WORLD AT THE CONDÉ NAST TRAVELER (US) READERS' CHOICE AWARDS AND FEATURED AMONG THE TOP 12 RESORTS IN SOUTH AFRICA



2015 - CONDÉ NAST TRAVELLER INDIA FEATURES &BEYOND PHINDA PRIVATE GAME RESERVE AS ONE OF SOUTH AFRICA'S SEXIEST WILDLIFE CAMPS



2014 - &BEYOND PHINDA PRIVATE GAME RESERVE IS # 10 IN CONDE NAST TRAVELER "BEST RESORTS IN SOUTH AFRICA" AFRICA & MIDDLE EAST CATEGORY

"We had the most wonderful time at Phinda Vlei Lodge. The staff were wonderful, nothing was too much trouble, the rooms were luxurious and the whole vibe was just right. We saw the Big Five and some of the Small Five. We noticed some of the little touches more than all of that. I have had some lovely holidays in my life, but Vlei's attention to detail was exceptional."

*- Martin and Patricia
&Beyond guest*

www.andBeyond.com

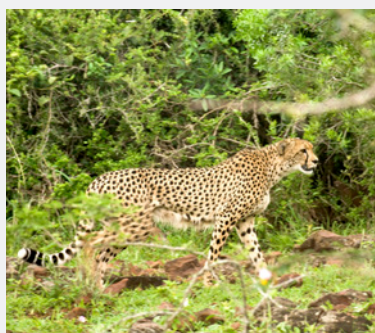


TABLE OF FACTS

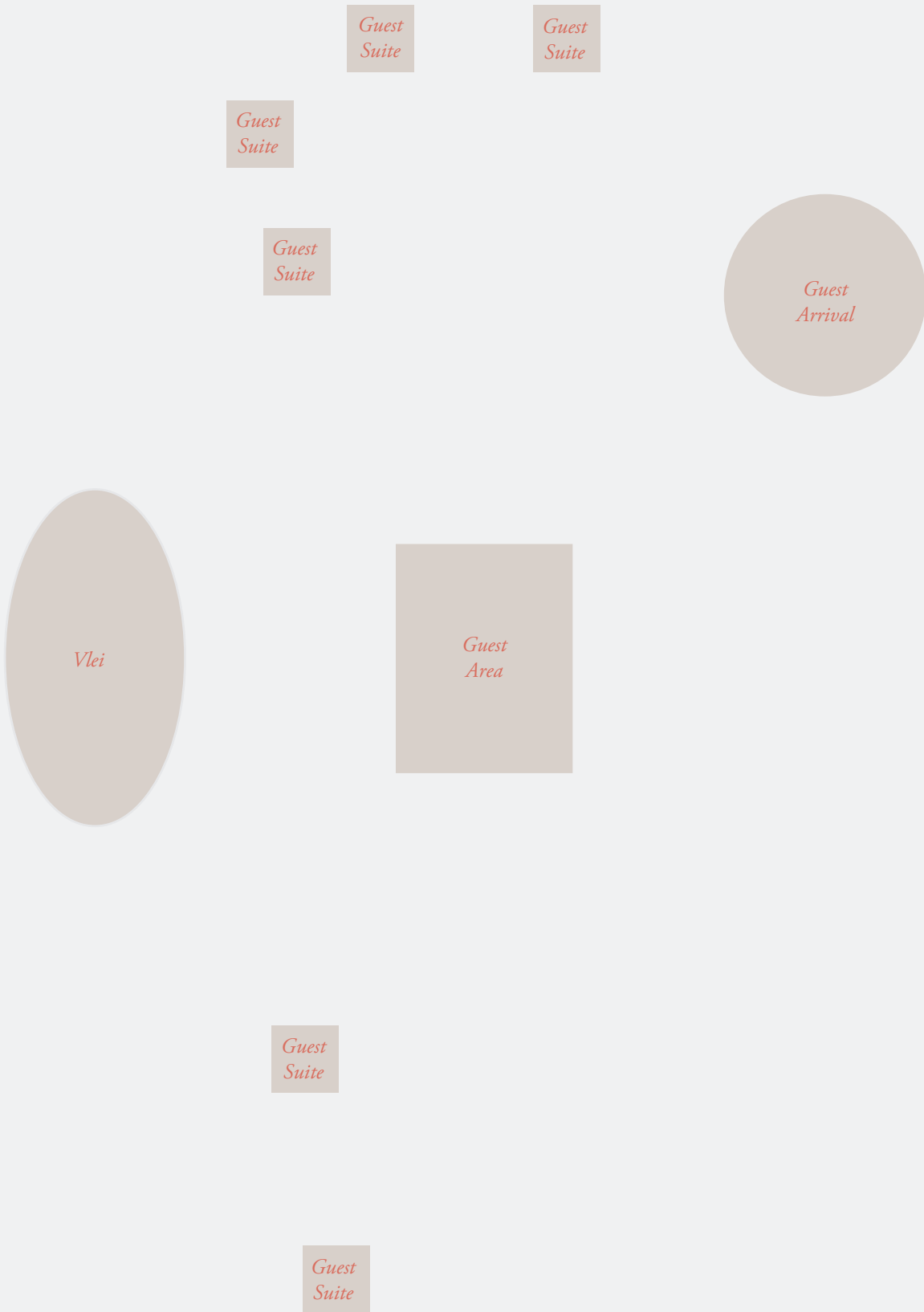
NUMBER OF ROOMS	6
MAXIMUM GUESTS	12
CHILDREN	Yes; no children under 16 on Walking Safaris; children 5 years and younger cannot participate in game drives; children aged 6 to 11 permitted on game drives at the lodge manager's discretion
CHILDMINDING	Available at an additional cost
TRIPLES	None
TWIN BEDS	All convertible to doubles
AIR CONDITIONING	Yes
OVERHEAD FANS	Yes
LAP POOLS	Yes
BATH	Yes
INDOOR SHOWERS	Yes
SEPARATE W.C.	Yes
IN-ROOM SAFE	Yes
PERSONAL BAR	Yes
TELEPHONE	Yes
HAIRDRYER	Yes
LAUNDRY INCLUDED	Yes
WHEELCHAIR ACCESS	No
DISTANCE BETWEEN ROOMS	25m / 82ft
CHECK IN / CHECK OUT	14h00 / 11h00
KOSHER FOOD	Available at an additional cost and with at least 4 weeks notice
POWER	220v AC

INTERNET ACCESS	Yes, wifi in rooms and guest area
PRIVATE 4X4 SAFARI VEHICLE	Depending on availability and at additional cost
CREDIT CARDS	Visa, Diners, Amex, MasterCard
IN-ROOM MASSAGE	Yes
EXERCISE EQUIPMENT	Gym in a bag available on request
WEATHER	Subtropical climate with hot, humid and wet summers from September to April and warm to cool and dry winters from May to August
RAINFALL	Rainfall averages 1 000mm / 39" per annum. Much of the rainfall comes in the form of short, intense afternoon thundershowers. Rain can be expected throughout the year
TEMPERATURE	Summer: daytime temperatures above 35°C / 95°F Winter: night-time temperature rarely drops below 10°C / 50°F
BEST TIME TO TRAVEL	All year round; best game viewing from March to end of September
MALARIA	The reserve is situated in a low-risk malaria area
AIRSTRIIP	The Phinda airstrip is not registered; coordinates are S27° .51.36' and E32° .18.48'
GPS COORDINATES	S27° 46.657' and E32° 20.942'
LODGE CLOSURE	Open year round

NOTE

- Please note that park fees and government charges may apply. Speak to your travel consultant for more details.
- Drones are not permitted at &Beyond reserves, lodges, camps and villas.

CAMP LAYOUT



CONTACT